



Restaurante in traditional area- LISBOA



[Description](#) | [Details](#) | [Location](#) | [More images](#) | [Contact Us](#)

Description



Restaurant with an area of 139.00 m2, consisting of a main room (62m2), bar (8 m2) , counter desk (8 m2) , cave for equipment and storage (3 m2) , kitchen (14 m2) , warehouse (7 m2) , wc employees (6 m2) , wc ladies (3 m2) , wc men (5 m2) , lounge space (24m2) . Fully equipped kitchen (ovens, refrigerators, tables, drinks machine, and so on.

Town center location whith various shops and transport walking distance. Day and night activity

We can help you find the right property!

+351 929 148 430 (Portugal)

+44 (0)79 6928 6511 (United Kingdom)

+33 (0) 1 72 77 43 81 (France)

Email : info@krystelannproperties.com

WWW.KRYSTELANNPROPERTIES.COM





Details

Offer type :	SALES
Price :	€ 450 000
Property type :	Shop
Area :	139 m ²

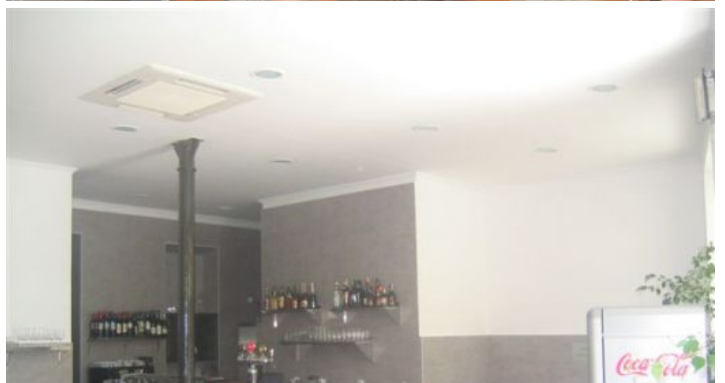
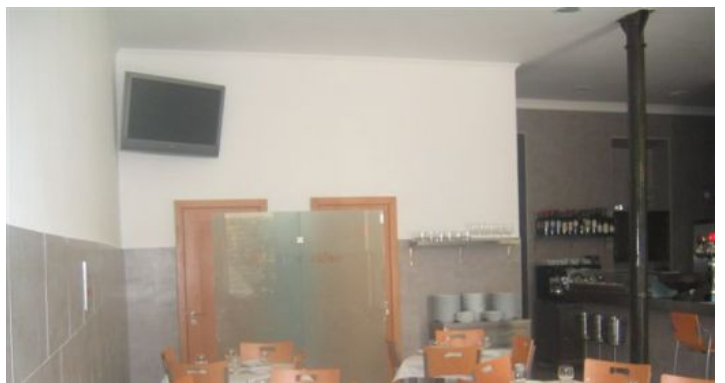
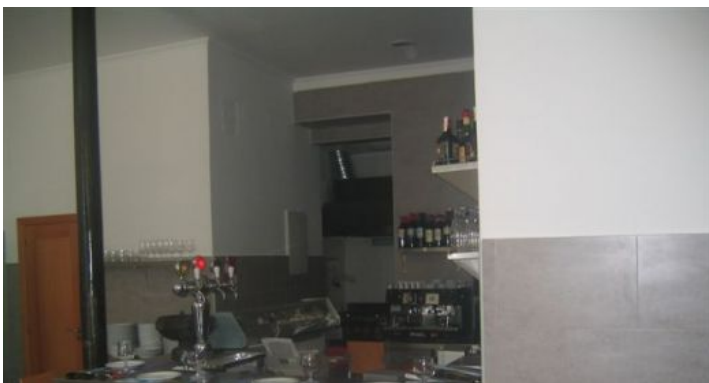
Location

City : Lisbon
Country : Portugal





More images







KRYSTEL ANN PROPERTIES

SALES / REF. 04.LOJ_145

Restaurante in traditional area- LISBOA

LISBON - PORTUGAL

€ 450 000

